



Overview and updates

Updated: June 2024

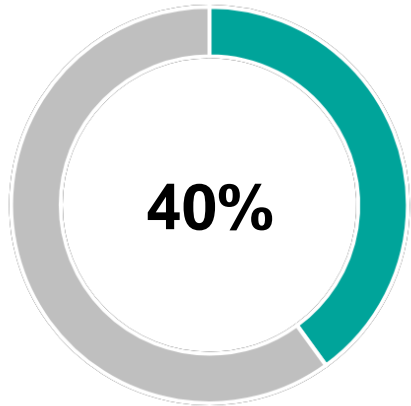
Welcome!

What is Career Connect Washington?

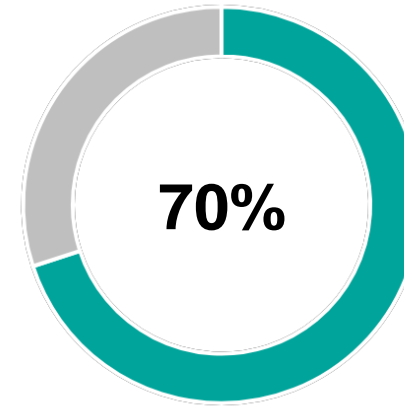
Business, labor, education, and community leaders who are creating work-based and academic programs for young people to explore, learn, and earn money or college level credit.

Career Connect Washington bridges the gap between employers and educators by providing the connection, funding, and support they need to deliver high quality academic and work-based experiences for Washington students, especially those furthest from opportunity.

The Problem: Students lack sufficient pathways to great careers



Percent of Washington students **gaining a credential or degree beyond high school**



Percent of Washington jobs **requiring a postsecondary credential**

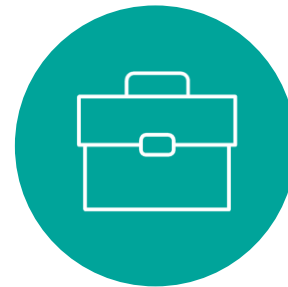
Goal: Connect young people to great careers while advancing their education

The Reality Today: Disconnected pathways between education and employment



Education

(K-12 and Postsecondary)



Employment

The Solution: Career connected learning is a braided pathway that connects students to the career opportunities around them, starting early in their schooling

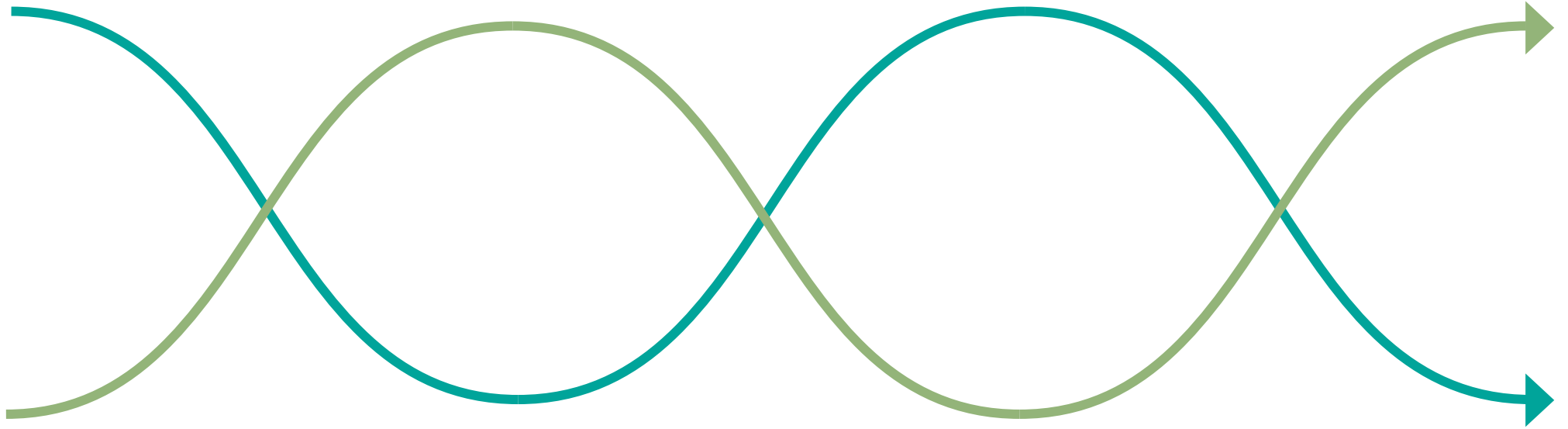


Employment



Education

(K-12 and Postsecondary)



The Solution: Connected pathways require a connected system

Employment

Education

Government



Industry



Employers

Labor

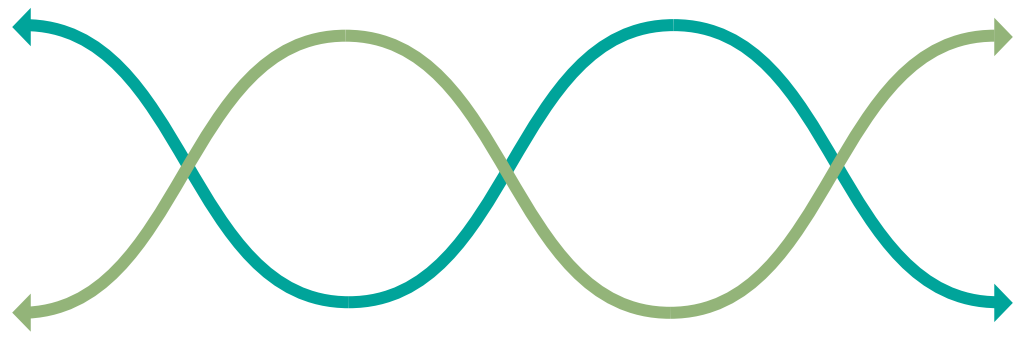
K-12



Higher Education



(incl. CTC, 4-Year)

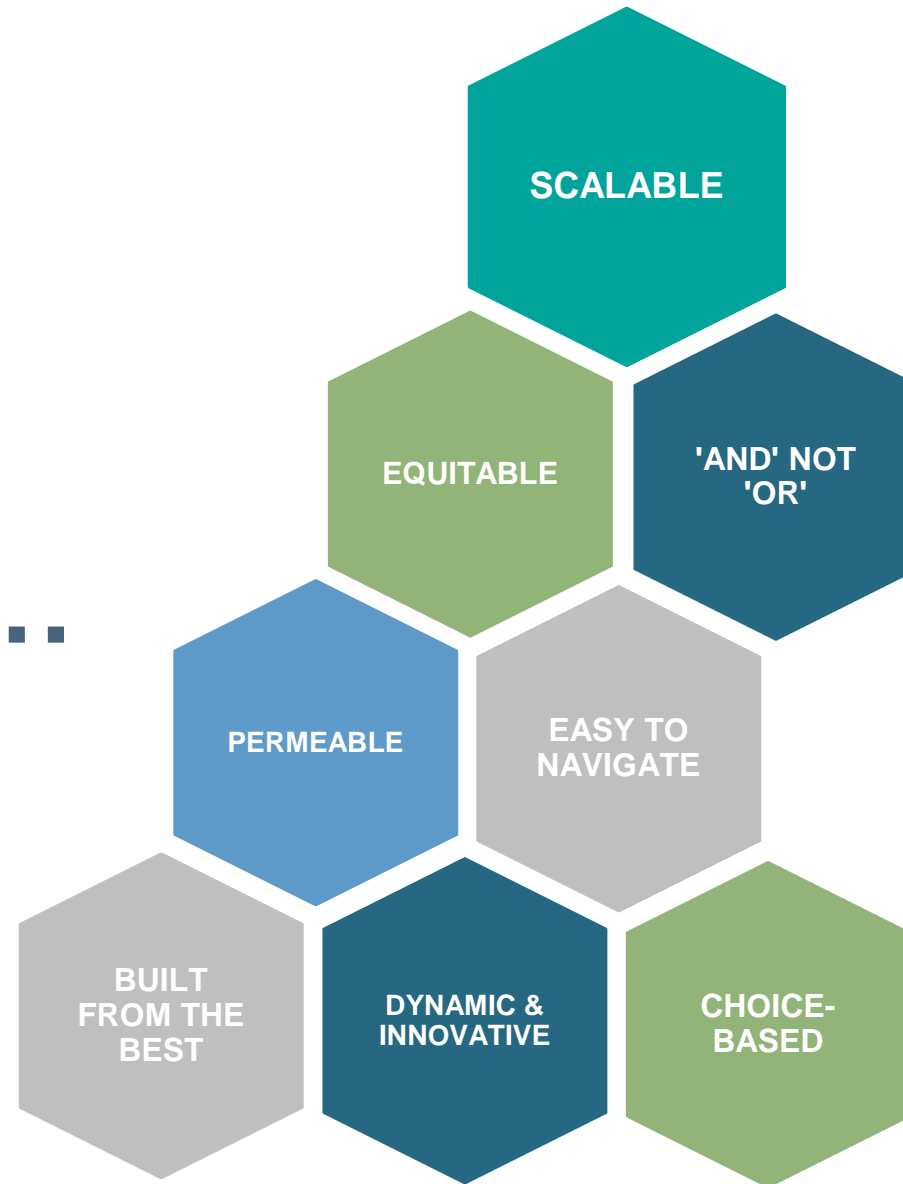


CCW provides the connective tissue to grow CCL programs statewide

CCW Vision and Principles

To reach our vision and ambition, we need a comprehensive system that follows a set of core principles

SYSTEM DESIGN PRINCIPLES...



...AND PROGRAM DESIGN PRINCIPLES

- Provide **positive ROI for employers**; built on skills and competencies **defined by employer**
- Be **high-quality** and lead to positive outcomes for young adults
- Leverage modern **digitally-connected tools**



CCW's Vision is to ensure equitable CCL access and outcomes for Washington students



Every young adult in Washington will have multiple pathways toward economic self-sufficiency and fulfillment, strengthened by a comprehensive state-wide system for career connected learning.



In order for every young adult to succeed, we must intentionally focus on populations furthest from opportunity especially students of color, Indigenous students, low-income students, rural students, and students with disabilities.



We acknowledge that systemic racism has held students back, especially Black and Indigenous students, and we aspire to build an anti-racist system for career connected learning.

Equity Measurement

Race, income, geography, gender, citizenship status, and other demographics and student characteristics will no longer predict the outcomes of Washington's students.

Career Connect Washington will build a career connected learning system that enables students who participate in Career Explore, Career Prep, and Career Launch to complete programs, attain sustaining-wage entry-level jobs, and reach family-sustaining wage careers (across industries and occupations) at equitable rates across population demographics.

Achieving this goal means that CCW will build a system that ensures that every young adult:

- Has **equitable access** to Career Connect Washington programs, including Career Explore, Career Prep, and Career Launch
- Is **enrolling in and completing** Career Launch programs at equitable rates across population demographics
- Is **entering living wage careers or college level learning** after their Career Launch programs at equitable rates

Detail: 5-part strategy to advance equity in career connected learning



Data

Identify system, resource, and outcome gaps by region, measure progress and outcomes against equity goals, and provide transparent and timely updates to stakeholders.



Technology

Connect students and families to existing programs and wraparound supports via the CCW program directory. Advocate for internet and technological access for students.



Student Supports

Implement policy and legislative changes to lower barriers to participation and completion for students furthest from opportunity.



Provide Best Practices

Develop professional toolkits and guides to support CCW partners in identifying and addressing equity challenges. Solutions will be informed by community relationships and tailored to achieve equity goals.



System Accountability

Measure performance of system partners including state agencies, regional networks, and intermediaries against agreed upon equity goals and outcomes.

We are building the infrastructure to create new and grow existing CCL programs

Definition

Work-based programs with aligned classroom learning that culminate in a postsecondary credential*, producing a competitive candidate for meaningful employment (includes Registered Apprenticeship programs)



Career Launch

Career-specific instruction at a worksite or in a classroom for academic credit

Career Prep

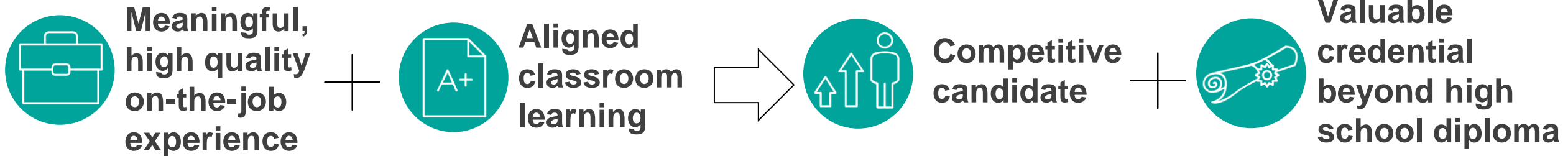
Early exposure opportunities to careers and career options (e.g. career fairs, worksite tours)

Career Explore

*Postsecondary credential means certificate, or at least one year towards an associates or bachelor's degree

Career Launch definition

Career Launch Programs: Positioning young adults for promising careers



- ✓ At worksite
- ✓ Paid and academic credit
- ✓ Occupation-aligned
- ✓ Employer supervisor at ratio typical of occupation
- ✓ Defined competencies and skills gained
- ✓ Full compliance with existing legal regulations

- ✓ Curriculum and program requirements developed in partnership with employers and industry
- ✓ Aligned with academic and employer standards
- ✓ Qualified instructors
- ✓ Dedicated student support (academic and career)

- ✓ Able to continue in employment **OR** successfully compete for jobs leading to financially-sustainable and fulfilling careers

- ✓ Credential attained
- OR**
- ✓ Significant progress (at least one year) towards a 2- or 4-year credential

Quality Control: Industry and Education-led endorsement process for Career Launch

Career Launch Programs will be endorsed in a rigorous CCW-led process including

- Industry-validated (e.g. students work-ready, critical mass of employers participating, valued across industry, high-potential career pathway)
- Academically-validated (e.g. state-wide recognition and transferability, aligned with high-quality academic standards)
- Endorsement will be reviewed every three years



Only endorsed Career Launch Programs will have access to increased support (including capacity funding) and count towards CCW goal

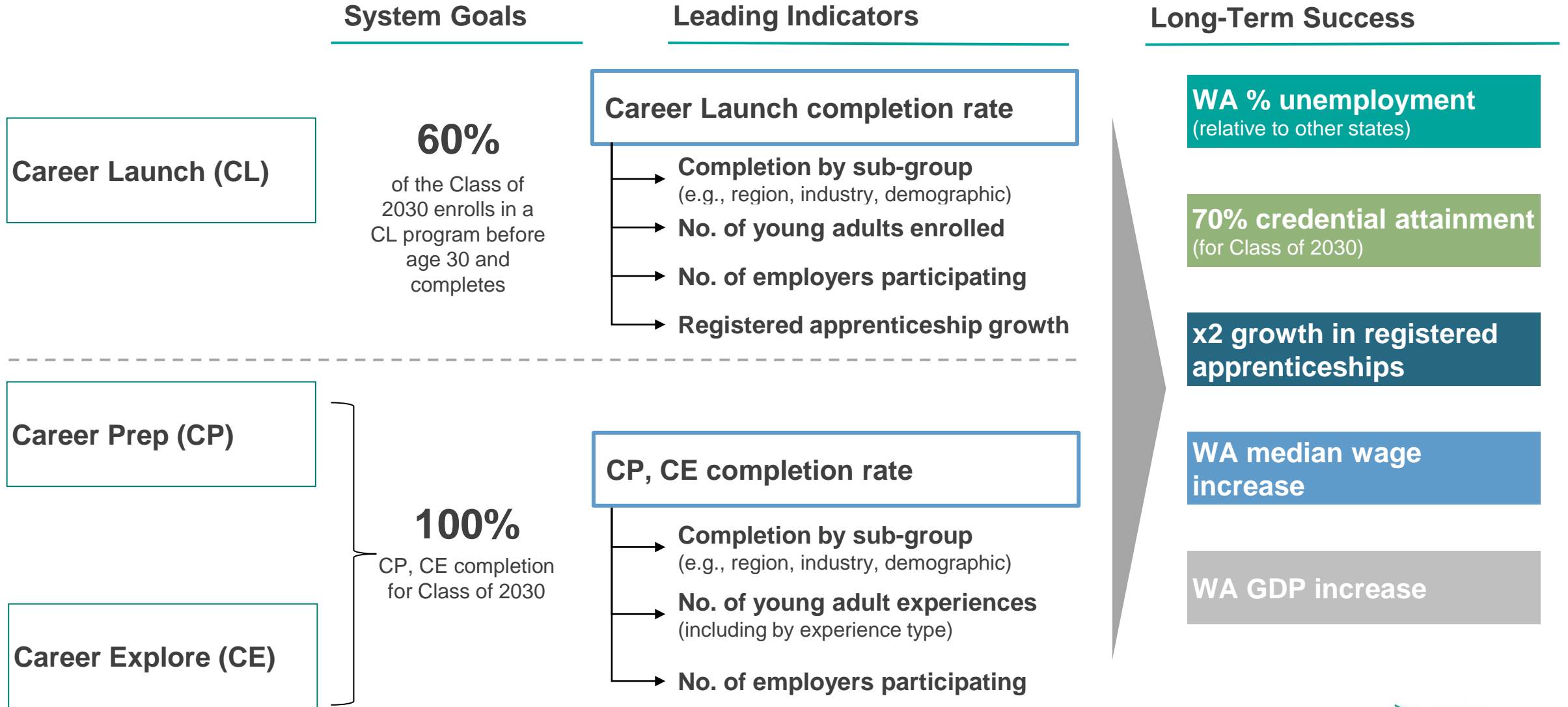
Career Launch endorsement applications reviewed monthly

Endorsement application available on [CCW Website](#)

- Programs can be offered through the community and technical colleges, training centers, universities and K-12 schools that partner with higher-education institutions
- Further information regarding K-12 Career Launch 1.2 FTE funding available via [slides](#) and [webinar](#)

CCW Scaling and Sustainability

Ambition: Enable all WA young adults to experience career connected learning



CCW's impact by the numbers

16,000

Nearly 16,000 students enrolled in Career Launch programs

(data from July 2022 – June 2023)¹

6,983

Cumulative Career Launch completions by students enrolled before age 30

(data from July 2019 – June 2023)¹

183

New Career Launch programs created

- Of which 70+ are Registered Apprenticeships

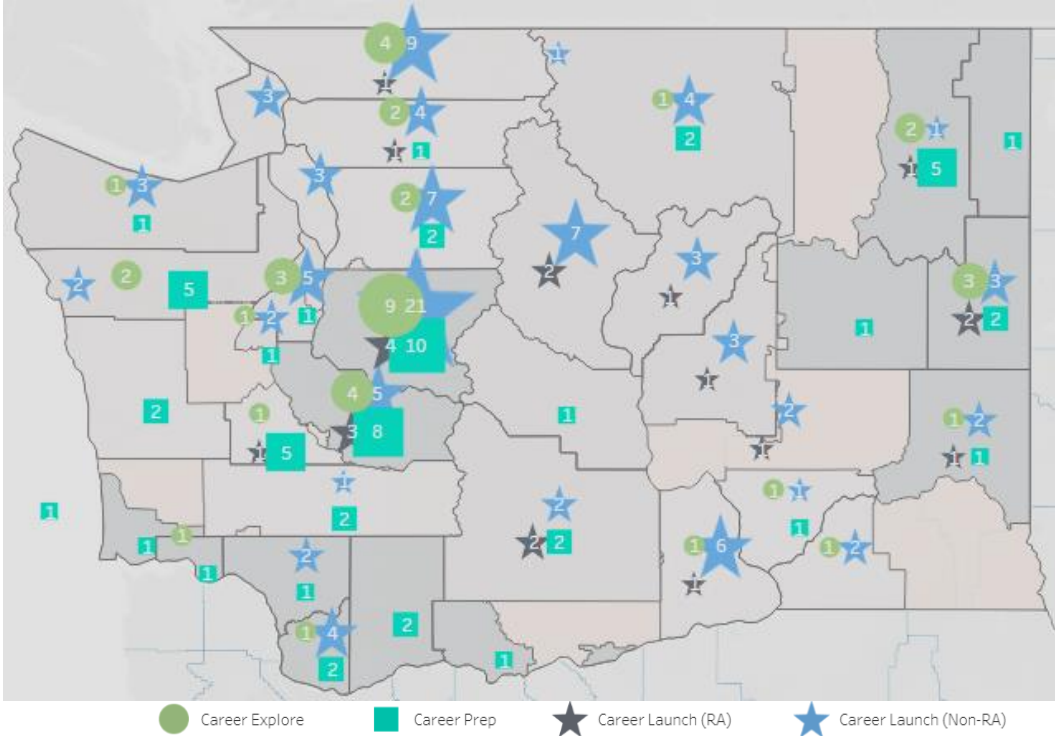
(data from July 2019 – June 2023)

\$29.2M

Good Jobs Challenge (Dept. of Commerce): \$23.5M over three years to grow career connected learning programs

Apprenticeship Building America (Dept. of Labor): \$5.7M over four years to grow Registered and Pre-Apprenticeships

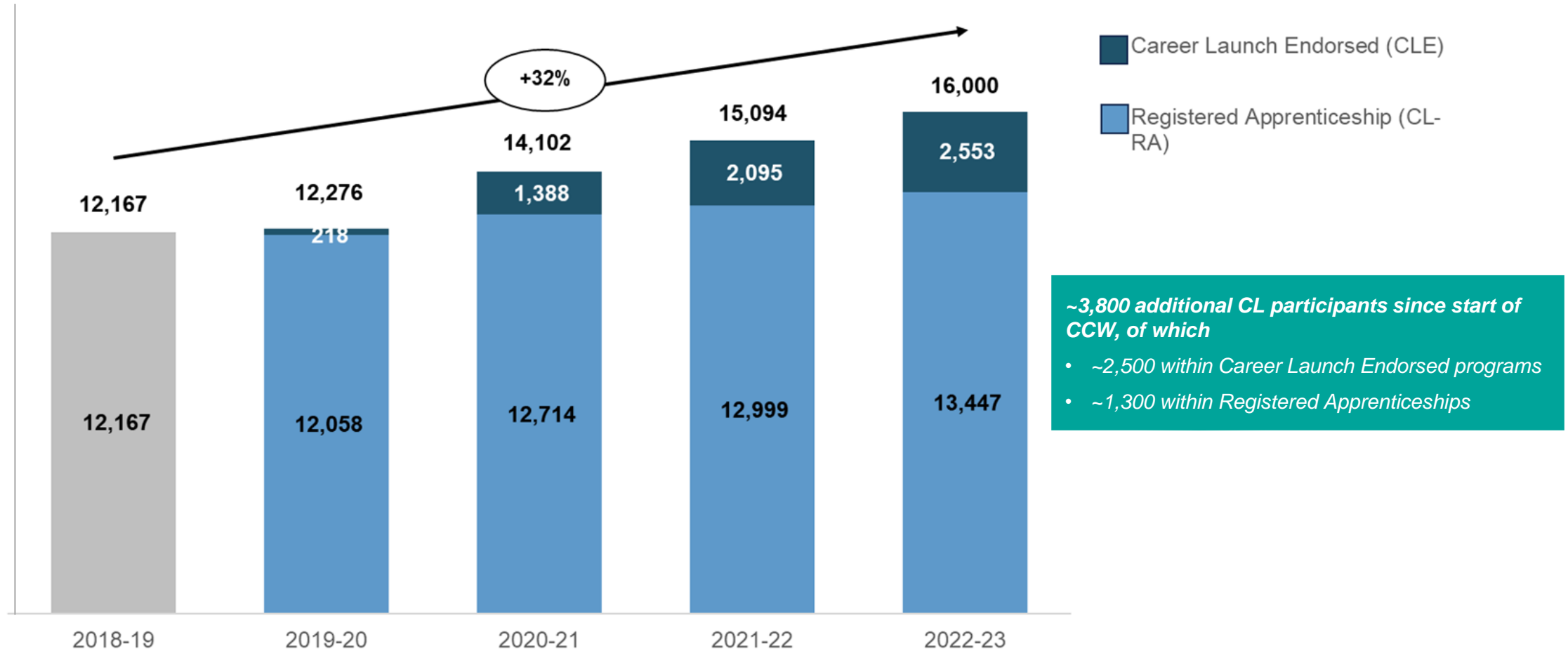
CCW Grant-Funded Programs



1. Apprenticeship enrollment and completion is subject to change up to 3 years after report date. Includes active state Registered Apprenticeships and Career Launch students; Apprenticeship numbers reflect total growth, influenced by a variety of factors, including economic expansion prior to the COVID-19 pandemic.

32% growth in Career Launch programs (inclusive of RA) since implementation of CCW legislation – growth continued despite pandemic and related challenges

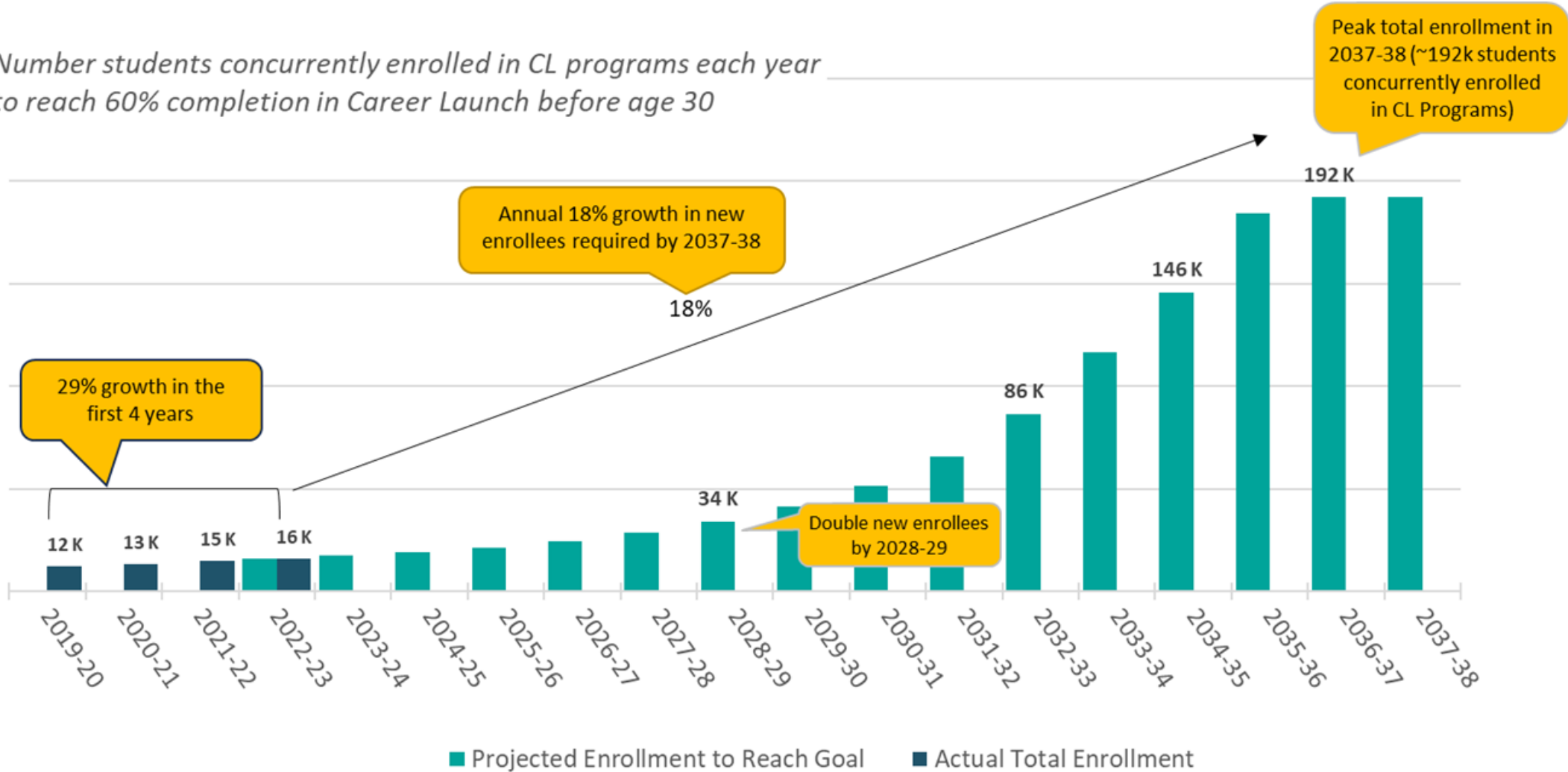
Career Launch participation (#)



CL endorsed enrollment and completion data provided by SBCTC available through March 2023, all other enrollment data is available through June 2023. Apprenticeship enrollment and completion is subject to change up to 3 years after report date.; Participation includes only those under 30 years old; Registered Apprenticeship (CL-RA) numbers reflect total growth, influenced by a variety of factors including economic expansion prior to the COVID-19 pandemic

CCW making early progress against long-term goal

Number students concurrently enrolled in CL programs each year to reach 60% completion in Career Launch before age 30



Enrollment of students under 30 years old as of December 2022; Participation includes only those under 30 years old; Registered Apprenticeship (CL-RA) numbers reflect total growth, influenced by a variety of factors including economic expansion prior to the COVID-19 pandemic

Why we know we can reach the enrollment goal



Demand from students,
teachers, counselors,
parents and families

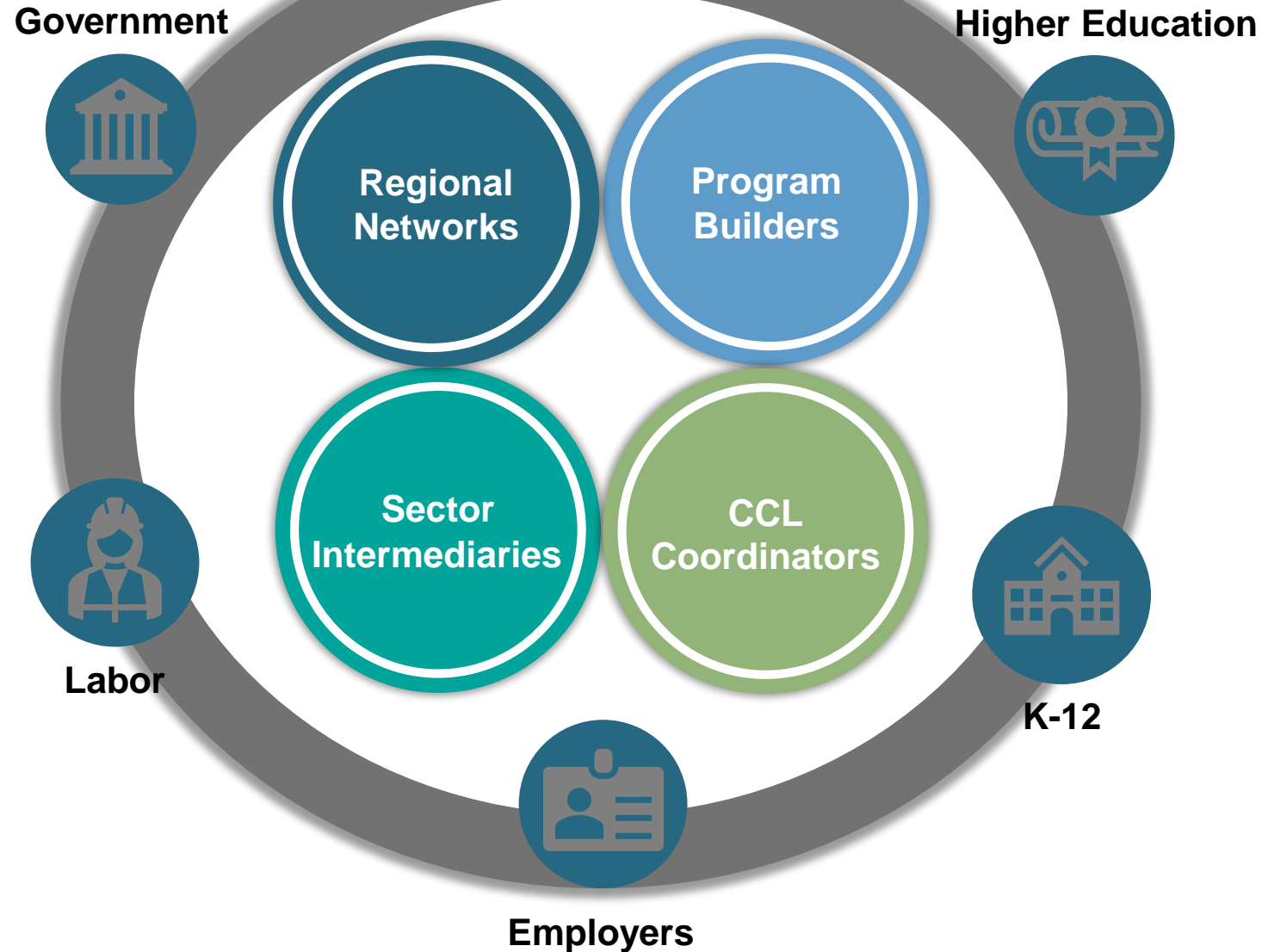


Demand from employers



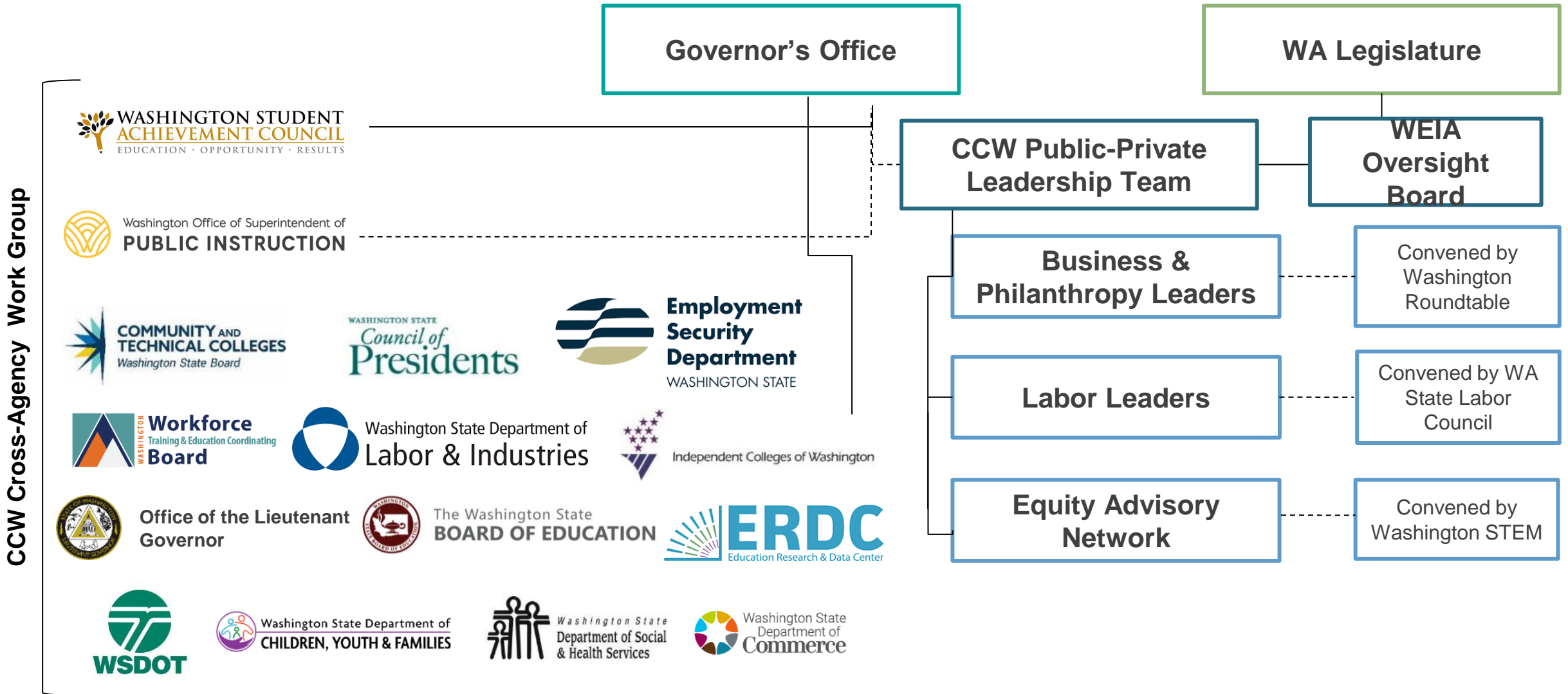
CCW infrastructure established;
track record of success at
achieving rapid scale

CCW has worked over the past several years to fill gaps and build connective tissue to help experts work together towards our shared vision



How CCW is organized

CCW Coalition of Partners: CCW Agency, Industry, and Equity Partners



CCW Public-Private Leadership Team



- Kimberly Hetrick, Director of CCW
- Coordinates cross-agency workgroup
- Builds and strengthens connective tissue across state government



- Andrew Clemons, CCW Manager
- Administers the grant program in state law
- Manages grants to regional networks, sector leaders, program builders, and partners
- Implements federal grant projects to scale programming

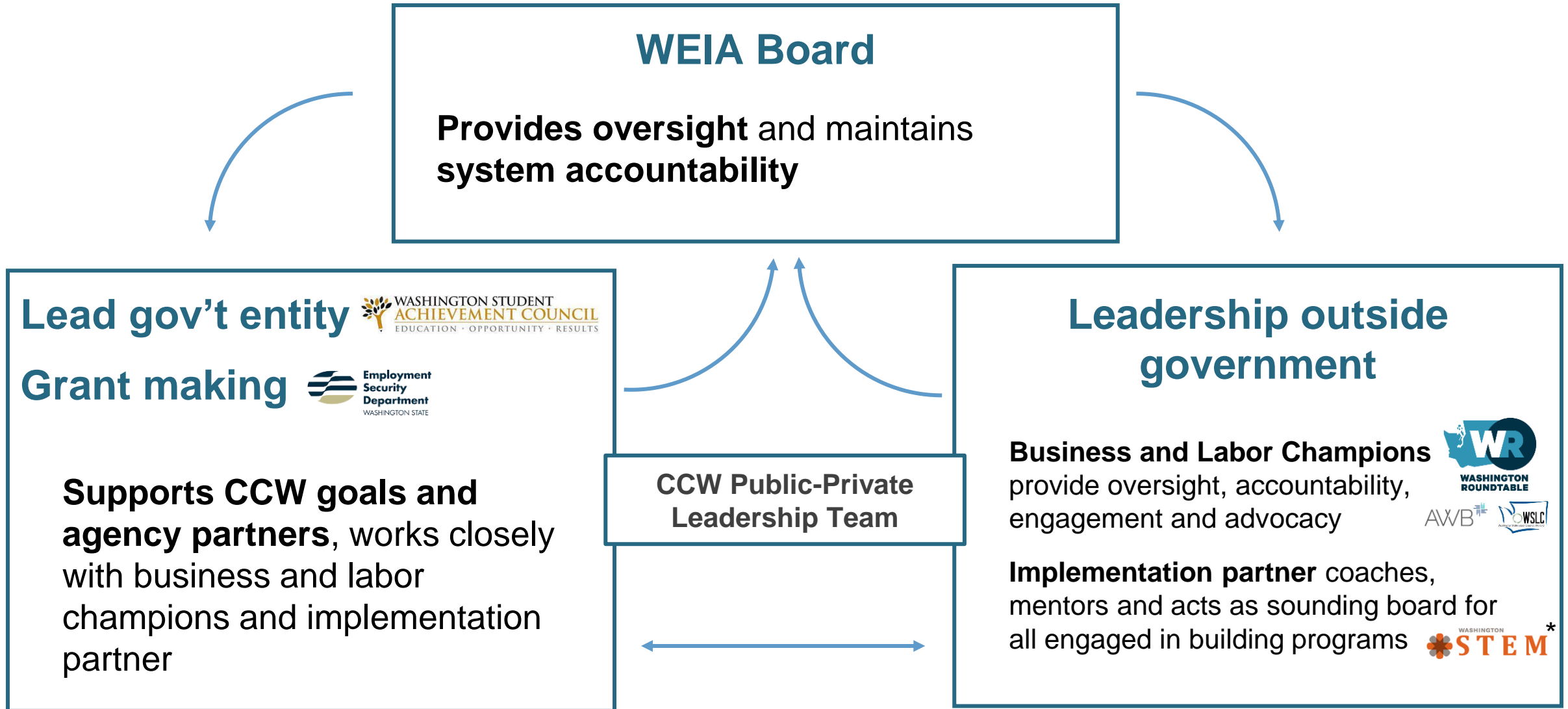


- Ingrid Stegemoeller, Industry Engagement Director
- Cultivating employer demand and champions in partnership with AWB and WSLC

Implementation Partner

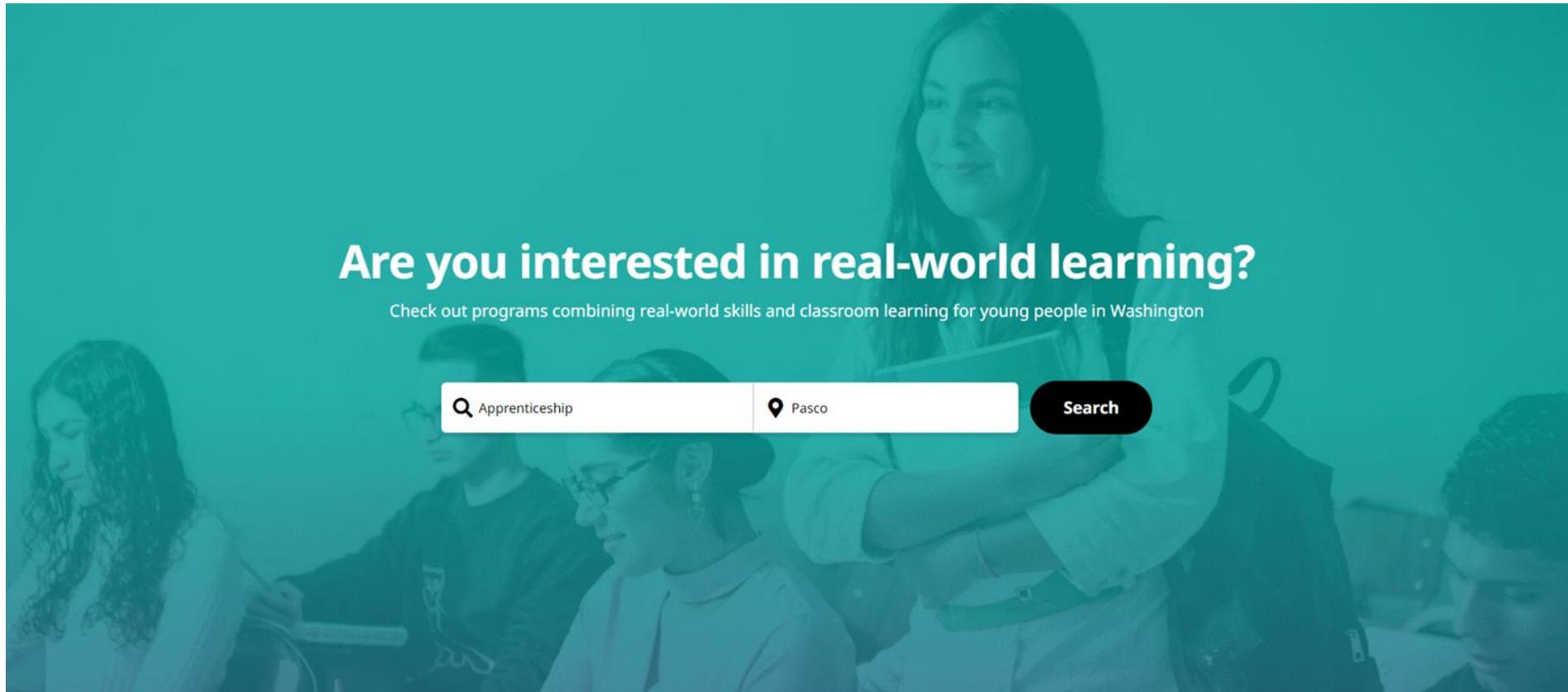
- Angie Mason-Smith, Program Director, Career Pathways
- Trusted statewide partner to lead implementation and technical assistance in the field
- Competitively-awarded, long-term contract
- Role currently supported by Washington STEM

CCW future leadership: a public-private partnership



*Role currently served by Washington STEM – this role will be competitively procured for July

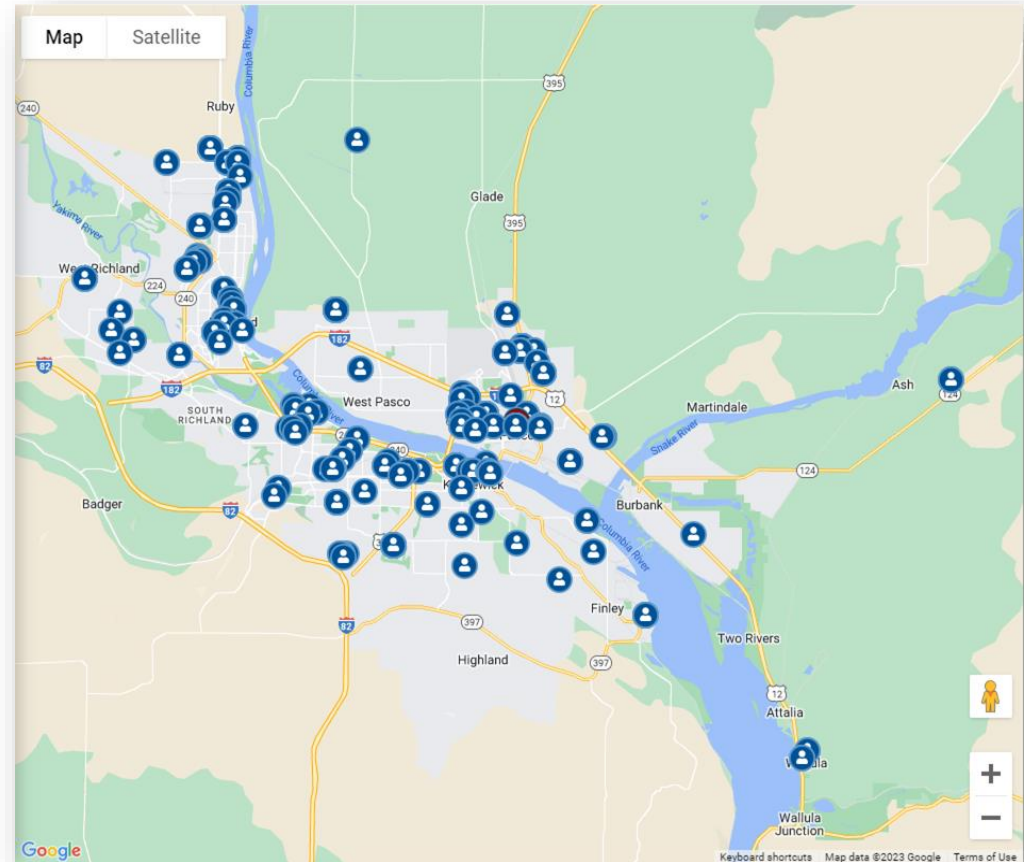
CCW Program Directory



Users search programs by their interest or location

Features:

- Users can search by:
 - Type of program: Explore, Prep, or Launch
 - Area of interest, occupation, or keyword
 - Geographic location
 - Hourly wage range
 - Educational Institution or Skill Center
- Connected to a directory of student support services
- Mobile device-friendly
- Embeddable on partners' websites
- Tested by students, teachers, counselors and feedback used to improve features



Example of search results of career connected learning programs in Pasco, WA

Integrated database of student support services

Automotive Technicians

Automotive Technology

📞 509-682-6614 | 🌐 [Visit Program Website](#) | ✉️ jwalter@wvc.edu

 Career Launch

Wage: \$13.50 an hour
Program: 250 worksite hours, 1160 class hours
Length:
Start Date: September 1, 2020
End Date: September 1, 2023

[How to Apply](#)

Program Information

Minimum Requirements

High School Diploma or Equivalent

Other Requirements

Must have a valid driver's license

Tags

Accessible by Public Transportation
Financial Aid Available

Locations

Operating in the Following Counties

Chelan, Douglas, Okanogan

Institutions

- [Wenatchee Valley College](#)
116 West Apple Avenue, Omak, WA

Resources to Help You



Financial Assistance

Find financial assistance options to help pay for school and everyday needs.

[View Info](#)



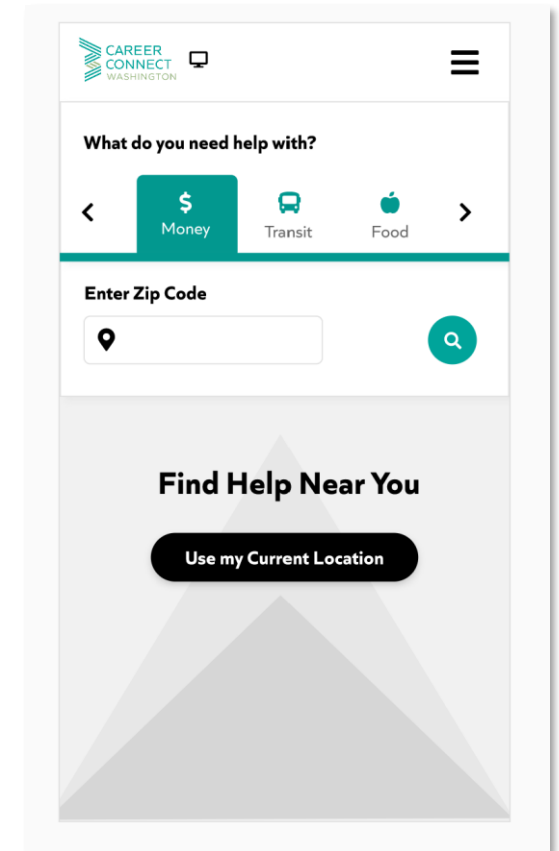
Transportation

Find services in your area that can help you pay for transit.

[View Info](#)



[View Info](#)



Integrated database of student support services

What do you need help with?

Enter Zip Code

Search

Apply Filters

Services

Education

- Help Find School (1)
- Basic Literacy (1)
- Help Pay for School (1)
- Computer Class (1)
- More Education (5)
- English as a Second Language (ESL) (1)
- Daily Life Skills (1)
- Alternative Education (1)
- English as a Second Language (ESL) (1)
- Resume Development (1)

Global Neighborhood

Global Neighborhood

Global Neighborhood program provides former refugees with opportunities for employment, ESL classes, assist with drivers education and computer skills training and also offer encouragement, advice and support.

Greenhouse Community Center

Greenhouse Community Center

GreenHouse Community Center focuses on providing services to people in need. Our first priority is ensuring basic needs are met by distributing food and clothing. Our second priority is helping people move forward by equipping them with education, job skills and providing counseling opportunities. Lastly, it is always a pleasure to provide nonessential items, such as school supplies and Christm...

Services

help find work, support network, alternative education, english as a second language (esl), skills & training, computer class

Serving

refugees, teens, young adults, adults, seniors, in jail

Services

food pantry, clothing, supplies for school, toys & gifts, counseling, more education, skills & training

Serving

anyone in need, teens, young adults, adults, seniors